

AJ SERIES

- Special Desing
- Heavy charge and discharge
- RoHS

- All-welded construction ensures reliable electrical contact
- Special design for heavy charge and discharge
- 500000 cycles of charge and discharge (0.8 second charge 1 ms discharge)
- Applications: Electric welding machine

AJ
 ↑ Low cost
 TJ P111



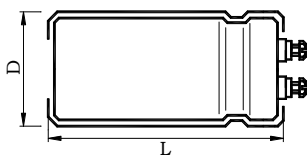
◆ SPECIFICATIONS

Items	Characteristics								
Operating Temperature Range	-25~+70°C								
Rated Working Voltage Range	315~475V								
Capacitance Range	100~2200μ F								
Capacitance Tolerance	-10~+50% (20°C, 120Hz)								
Dissipation Factor (MAX) 20°C, 120Hz	<table border="1"> <tr> <td>U_R(V)</td> <td>315</td> <td>450</td> <td>475</td> </tr> <tr> <td>tanδ</td> <td colspan="3">0.10</td> </tr> </table>	U _R (V)	315	450	475	tanδ	0.10		
U _R (V)	315	450	475						
tanδ	0.10								
Leakage Current (MAX)	I=0.03C _R U _R or 5mA whichever is minimum (at 20°C, After 5 minutes application of rated voltage) I=Leakage Current (μA) U _R =Rated Voltage (V) C _R =Rated Capacitance (μF)								

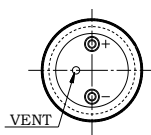
Heavy Charge and Discharge	
Life Time	500000 cycles
Leakage Current	≤200% of Specified value
tanδ Change	≤200% of specified value
Capacitance Change	Within±20% of initial value
Condition Applied Voltage Duration of Charge Duration of Discharge Applied Temperature Failure Rate Level	U _R 0.8 seconds Time constant (τ) = 1 ms 40°C 0%

◆ Dimensions

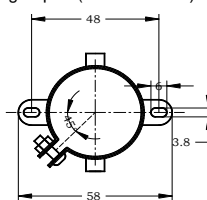
● Terminal Code



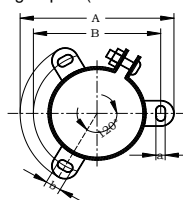
L-Type: Small terminal M5 thread
 S-Type: Large terminal M6 thread



Ring Clip: T (Φ35 Standard)



Ring Clip: S (Φ51~Φ89 Standard)



Ring Clip Dimensions:

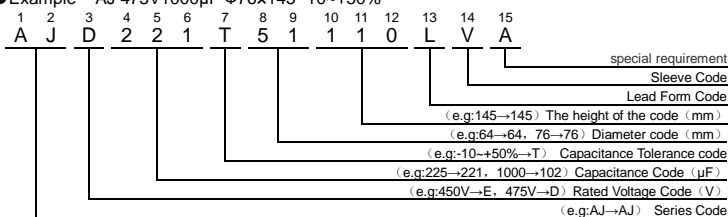
ΦD	A	B	a	b
51	73.0	63.5	4.5	7
64	85.1	76.2	4.5	7
76	98.4	88.9	4.5	7
89	111.1	101.6	4.5	7

For detailed dimension & tolerance, please refer to P90

- Please consult to us for the terminal type not displayed in content.

◆ PART NUMBER SYSTEM

- Example AJ 475V1000μF Φ76×145 -10~+50%



AJ SERIES

◆ Standard Ratings

WV _{DC} (Surge Voltage) (V)	Cap (μF)	Size D×L (mm)	tanδ 20℃120Hz	Catalog Part Number	WV _{DC} (Surge Voltage) (V)	Cap (μF)	Size D×L (mm)	tanδ 20℃120Hz	Catalog Part Number
315 (360)	330	35×100	0.10	AJI331T35100□VA	450(500)	330	51×100	0.10	AJE331T51100□VA
	470	51×100	0.10	AJI471T51100□VA		100	35×100	0.10	AJD101T35100□VA
	1000	64×140	0.10	AJI102T64140□VA		225	51×110	0.10	AJD221T51110□VA
	1500	76×120	0.10	AJI152T76120□VA		470	76×120	0.10	AJD471T76120□VA
	2200	76×160	0.10	AJI222T76160□VA		1000	76×145	0.10	AJD102T76145□VA
475 (530)									

*□Enter the appropriate terminal code

*Please ask for advice for other sizes.

*Aluminum electrolytic capacitor will emit heat when ripple current is applied, the performance will deteriorate when temp. rises. the useful life will be half of original life when temp rises every 5℃. Please reduce the ripple current when using capacitor.